


STRUTTURA: teak  
CORDE: poliester riciclato (corda Ø 3 mm)\*

STRUCTURE: teak  
CORDES: polyester recyclé (corde Ø 3 mm)\*

ESTRUCTURA: teca  
CUERDAS: poliéster reciclado (cuerda Ø 3 mm)\*

STRUCTURE: teak  
CORDS: recycled polyester (cord Ø 3 mm)\*

STRUKTUR: Teak  
SHNUERE: recyceltes Polyesterschnur (Ø 3 mm Schnur)\*

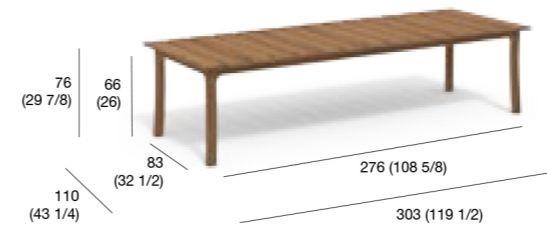
Teak	
TEAK + CORD MOLE	TSOXXX-01-12  Structure: 01 Teak Cord: 12 Mole
	

IT Prodotto in teak certificato 100% FSC™  
EN Product in 100% FSC™ certified teak  
FR Produit en teak certifié 100% FSC™  
DE Produkt aus 100% FSC™ – zertifiziertem Teakholz erhältlich  
ES Producto en teca 100% certificada FSC™



## TESEO 300 table

Code TSO300-01-12



100 kg

storage cover SC-TSO300

## TESEO 049 chair

Code TSO049-01-12

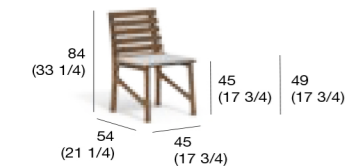
Cushion TESEO 049 seat

0,7 kg 1 m

cat. HD1 CSHD-TSO049-XXX

cat. HD2 CSHD-TSO049-XXX

cat. HD CF CSHD-TSO049-CF

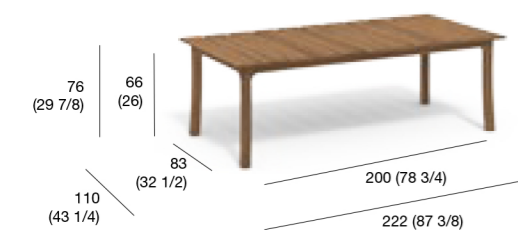


10 kg

storage cover SC-TSO049

## TESEO 220 table

Code TSO220-01-12



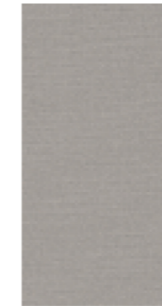
85 kg

storage cover SC-TSO220

IT \*Le corde vengono trattate con un processo avanzato anti-pilling, che permette l'inserimento e l'estrazione della corda nel legno senza compromettere l'integrità della fibra, evitando lo strappo dei fili e preservando la superficie della corda.  
EN \* The ropes are treated with an advanced anti-pilling process, allowing the insertion and extraction of the rope in wood without compromising the integrity of the fiber, preventing thread fraying and preserving the rope's surface.  
FR \*Les cordes sont traitées avec un processus avancé anti-boulochage, permettant l'insertion et l'extraction de la corde dans le bois sans compromettre l'intégrité de la fibre, évitant l'effilochage des fils et préservant la surface de la corde.  
DE \*Die Seile werden mit einem fortschrittlichen Anti-Pilling-Verfahren behandelt, das das Einführen und Herausziehen des Seils in Holz ermöglicht, ohne die Integrität der Faser zu beeinträchtigen, Fadenrisse zu verhindern und die Oberfläche des Seils zu erhalten  
ES \*Las cuerdas se tratan con un proceso avanzado anti-pilling, que permite la inserción y extracción de la cuerda en la madera sin comprometer la integridad de la fibra, evitando el deshilachado de los hilos y preservando la superficie de la cuerda.

# RODA Fabrics

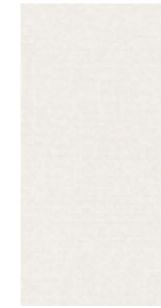
## DEW Cat. 1 / Cat. hydro 1



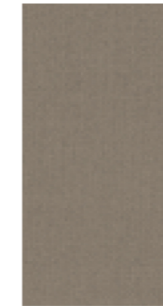
T27 STEEL



T28 SAND



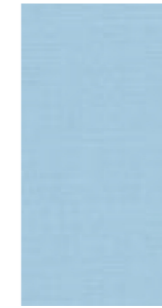
T31 WHITE



T36 MOLE



T37 GUN



T43 SKY



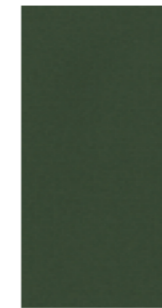
T49 TURQUOISE



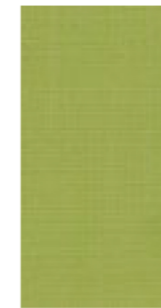
T58 DENIM



T59 NAVY



T45 LIME



T44 KIWI



T47 LEMON

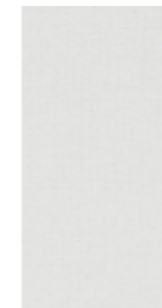


T49 ORANGE

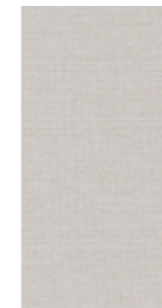


T57 RUST

## SHORE Cat. 1 / Cat. hydro 1



S21 WHITE



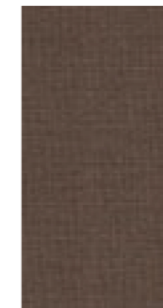
S25 STEEL



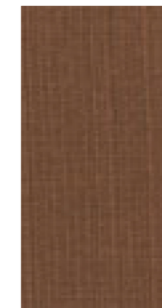
S26 STONE



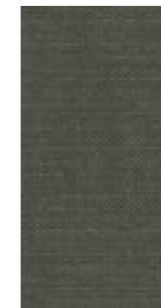
S23 SAND



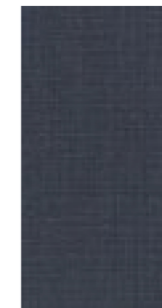
S28 NUT



S33 RUST



S35 OLIVE



S36 NAVY

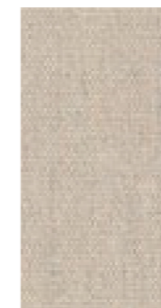
## ECO Cat. 1 / Cat. hydro 1



C01 GRAPHITE



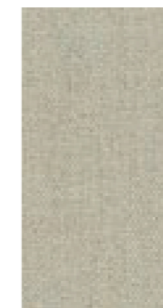
C02 STONE



C03 SAND



C04 RUST



C05 MINT



C06 GRASS



C07 NAVY



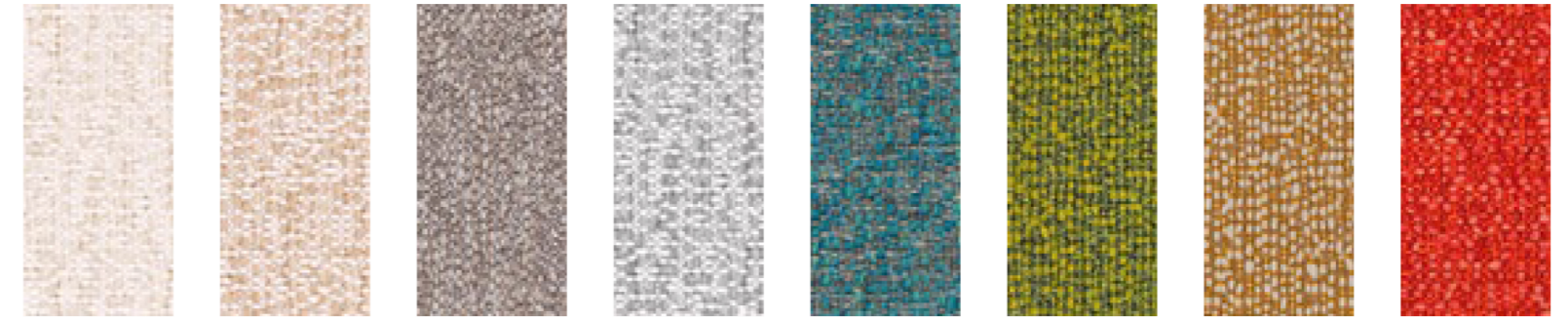
C08 DENIM

**OXFORD**  
Cat. 2 / Cat. hydro 2



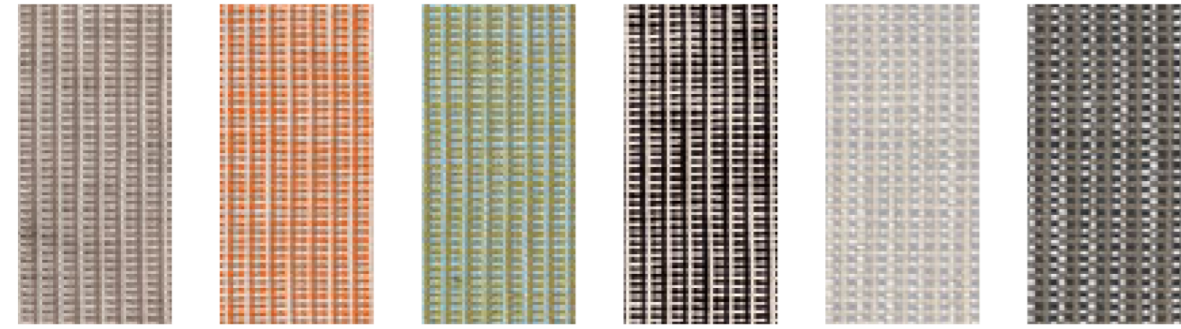
G01 MOLE    G02 KIWI    G03 RUST    G04 PEACOCK    G05 BLACK

**ALLEGRO**  
Cat. 2 / Cat. hydro 2



U07 WHITE    U03 SAND    U08 MOLE    U09 STEEL    U04 PEACOCK    U02 GRASS    U06 WHEAT    U05 ORANGE

**LANE**  
Cat. 2 / Cat. hydro 2

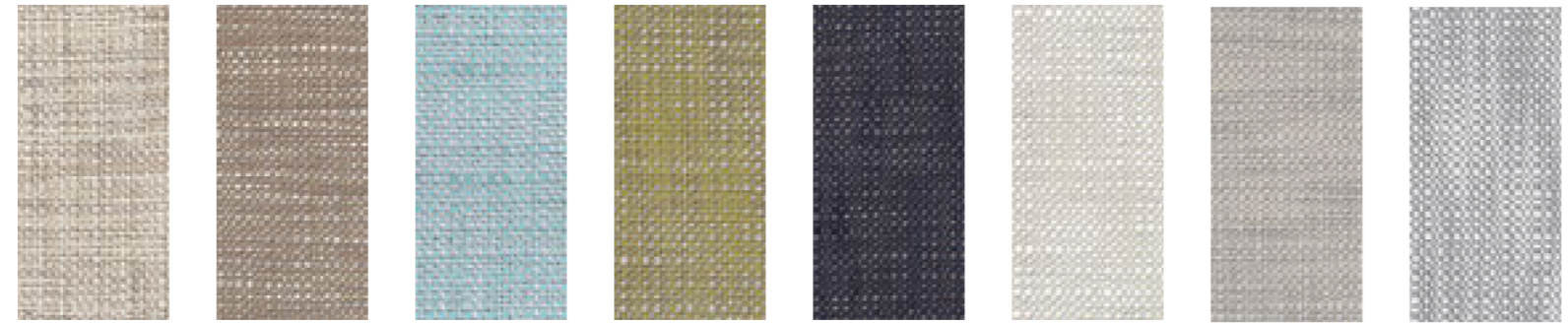


L01 MOLE/SAND    L02 CURRY/SAND    L03 GRASS/SKY    L05 BLACK/SAND    L09 STEEL/SAND    L10 STONE/MOLE



U01 FUCSIA

**PARK**  
Cat. 2 / Cat. hydro 2



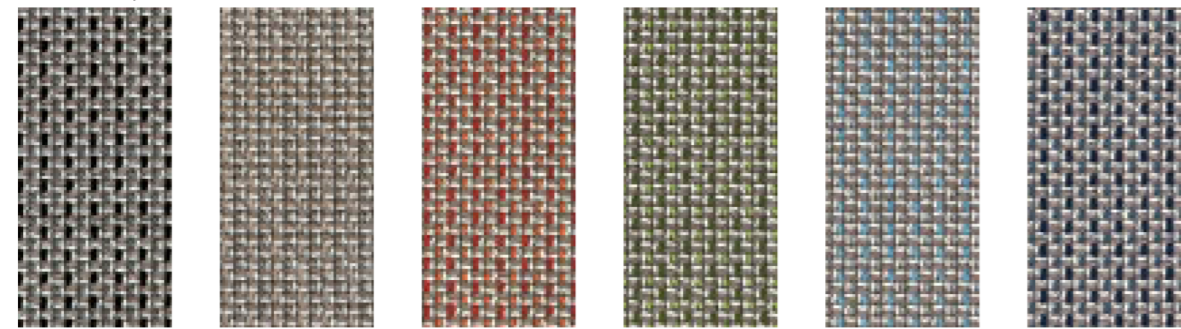
K01 SAND    K02 MOLE    K04 SKY    K05 GRASS    K06 NAVY    K08 WHITE    K09 STEEL    K12 ICE

**BOUQUET**  
Cat. 2 / Cat. hydro 2



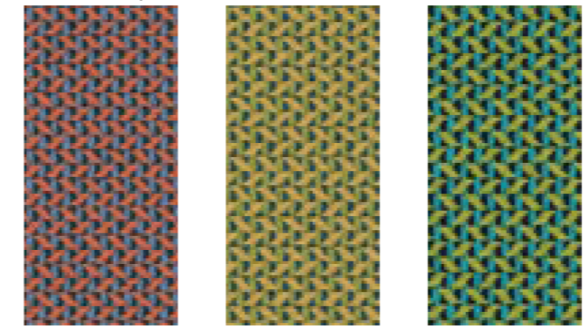
Q11 WHITE    Q12 SAND    Q15 BLUE    Q14 GRASS    Q13 BRICK

**DOMINO**  
Cat. 2 / Cat. hydro 2



M01 GREY    M02 SAND    M03 RUST    M04 GRASS    M05 SKY    M06 BLUE

**SCALA**  
Cat. 2 / Cat. hydro 2



Y01 PEACH    Y02 OIL    Y03 PEACOCK