

IT
STRUTTURA: acciaio inox verniciato a polvere
SCHIENALE: batyline

FR
STRUCTURE: acier inoxydable laqué avec une peinture poudre
DOSSIER: batyline

ES
ESTRUCTURA: acero inoxidable con pintura en polvo
RESPALDO: batyline

EN
STRUCTURE: powder coated stainless steel
BACKREST: batyline

DE
STRUKTUR: pulverbeschichteter Edelstahl
RÜCKENSTÜTZE: batyline

	Metal/Smoke		Metal/Milk	
BATYLINE GREY	PLNXXX-01-01 Structure: Metal/01 Smoke Batyline: 01 Grey		PLNXXX-02-01 Structure: Metal/02 Milk Batyline: 01 Grey	
BATYLINE SAND	PLNXXX-01-02 Structure: Metal/01 Smoke Batyline: 02 Sand		PLNXXX-02-02 Structure: Metal/02 Milk Batyline: 02 Sand	
BATYLINE BROWN	PLNXXX-01-03 Structure: Metal/01 Smoke Batyline: 03 Brown		PLNXXX-02-03 Structure: Metal/02 Milk Batyline: 03 Brown	
BATYLINE OLIVE	PLNXXX-01-06 Structure: Metal/01 Smoke Batyline: 06 Olive		PLNXXX-02-06 Structure: Metal/02 Milk Batyline: 06 Olive	
BATYLINE NAVY	PLNXXX-01-10 Structure: Metal/01 Smoke Batyline: 10 Navy		PLNXXX-02-10 Structure: Metal/02 Milk Batyline: 10 Navy	
BATYLINE GINGER	PLNXXX-01-11 Structure: Metal/01 Smoke Batyline: 11 Ginger		PLNXXX-02-11 Structure: Metal/02 Milk Batyline: 11 Ginger	
BATYLINE SKY	PLNXXX-01-09 Structure: Metal/01 Smoke Batyline: 09 Sky		PLNXXX-02-09 Structure: Metal/02 Milk Batyline: 09 Sky	

PLEIN AIR 059 armchair

Code PLN059-XX-XX

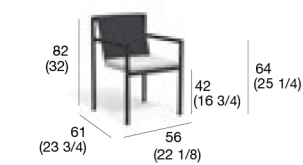
Cushion PLEIN AIR 059 seat

1 kg 0,7 m

cat. HD1 CSHD-PLN059-XXX

cat. HD2 CSHD-PLN059-XXX

cat. HD CF CSHD-PLN059-CF



10,5 kg

storage cover SC-PLN059

PLEIN AIR 068 lounge chair

Code PLN068-XX-XX

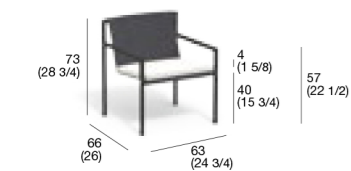
Cushion PLEIN AIR 068 seat

1 kg 1 m

cat. HD1 CSHD-PLN068-XXX

cat. HD2 CSHD-PLN068-XXX

cat. HD CF CSHD-PLN068-CF



13 kg

storage cover SC-PLN068

IT
STRUTTURA E GAMBE: alluminio verniciato a polvere
PIANO: gres

FR
STRUCTURE ET PIEDS: aluminium laqué avec une
peinture poudre
PLATEAU: grès

ES
ESTRUCTURA E PATAS: aluminio con pintura en polvo
TABLERO: gres

EN
STRUCTURE AND LEGS: powder coated aluminium
TOP: gres

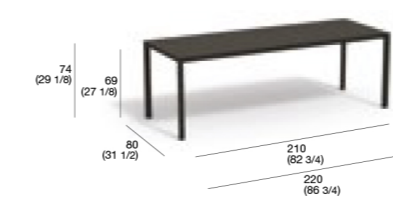
DE
STRUKTUR UND TISCHBEINE: pulverbeschichtetes
Aluminium
TOP: Steingut

	Metal/Smoke		Metal/Milk		
GRES SAND	PLNXXX-01-57 Structure: Metal/01 Smoke Top: Gres 57 Sand		GRES SAND	PLNXXX-02-57 Structure: Metal/02 Milk Top: Gres 57 Sand	
GRES MOLE	PLNXXX-01-58 Structure: Metal/01 Smoke Top: Gres/58 Mole		GRES MOLE	PLNXXX-02-58 Structure: Metal/02 Milk Top: Gres/58 Mole	
GRES LEAD	PLNXXX-01-59 Structure: Metal/01 Smoke Top: Gres/59 Lead		GRES LEAD	PLNXXX-02-59 Structure: Metal/02 Milk Top: Gres/59 Lead	

PLEIN AIR 003 table

Limited Stock

Code PLN003-XX-XX

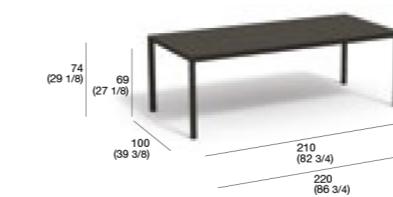


55 kg

storage cover SC-PLN003

PLEIN AIR 004 table

Code PLN004-XX-XX



58 kg

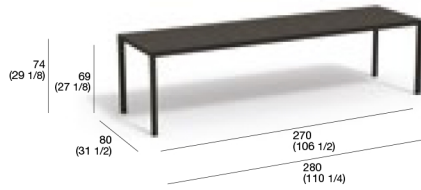
storage cover SC-PLN004

Plein Air

PLEIN AIR 005 table

Limited Stock

Code PLN005-XX-XX



61 kg

storage cover SC-PLN005

PLEIN AIR 006 table

Code PLN006-XX-XX

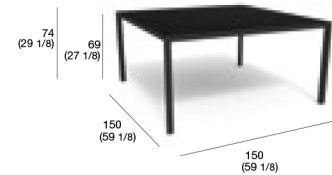


76 kg

storage cover SC-PLN006

PLEIN AIR 007 table

Code PLN007-XX-XX



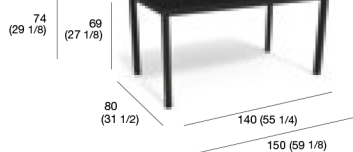
61 kg

storage cover SC-PLN007

PLEIN AIR 008 table

Limited Stock

Code PLN008-XX-XX

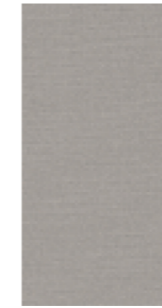


40 kg

storage cover SC-PLN008

RODA Fabrics

DEW Cat. 1 / Cat. hydro 1



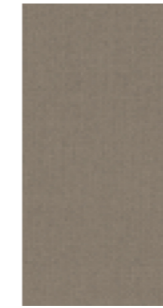
T27 STEEL



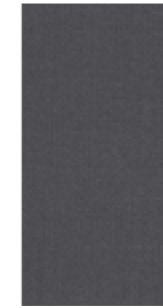
T28 SAND



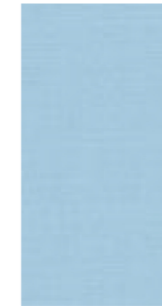
T31 WHITE



T36 MOLE



T37 GUN



T43 SKY



T49 TURQUOISE



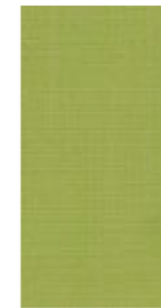
T58 DENIM



T59 NAVY



T45 LIME



T44 KIWI



T47 LEMON

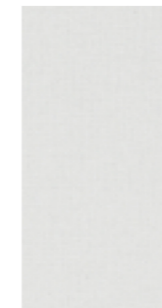


T49 ORANGE

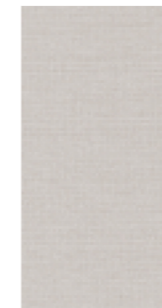


T57 RUST

SHORE Cat. 1 / Cat. hydro 1



S21 WHITE



S25 STEEL



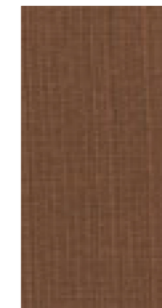
S26 STONE



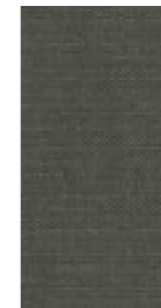
S23 SAND



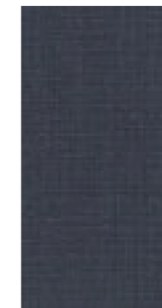
S28 NUT



S33 RUST



S35 OLIVE



S36 NAVY

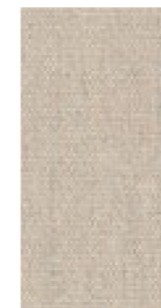
ECO Cat. 1 / Cat. hydro 1



C01 GRAPHITE



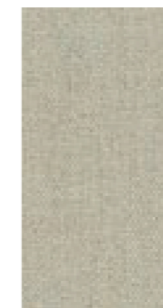
C02 STONE



C03 SAND



C04 RUST



C05 MINT



C06 GRASS



C07 NAVY



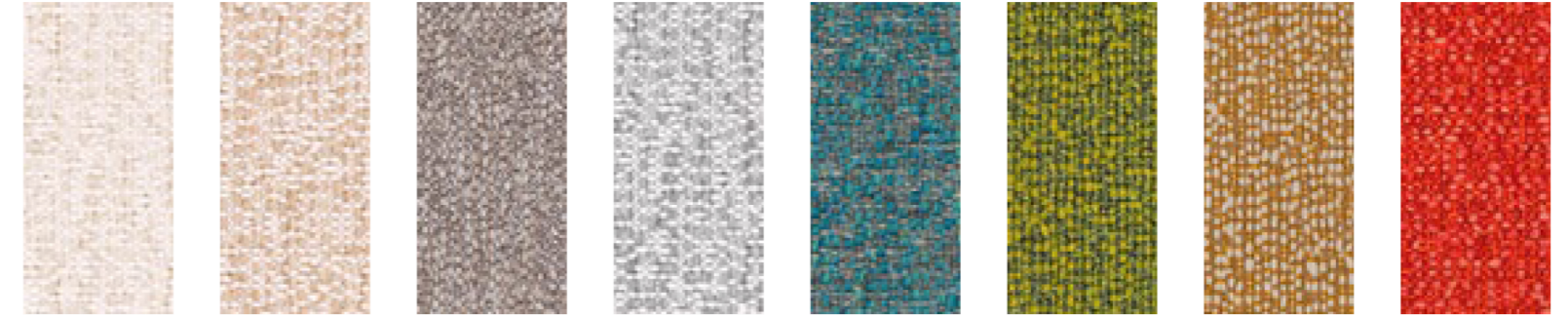
C08 DENIM

OXFORD
Cat. 2 / Cat. hydro 2



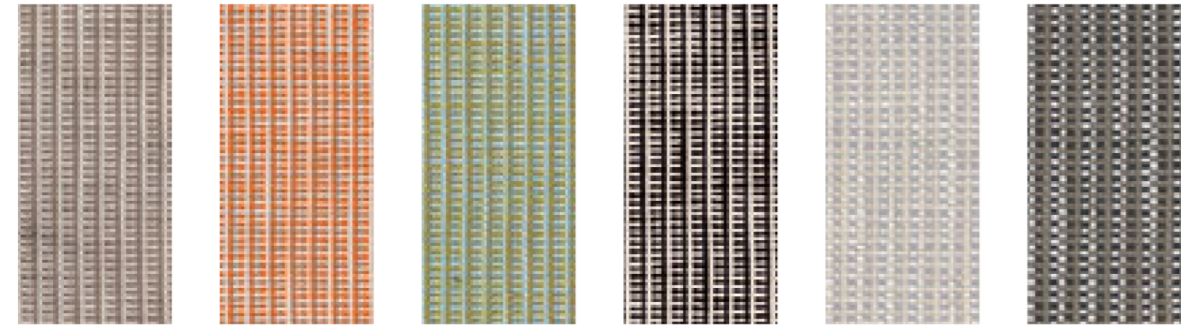
G01 MOLE G02 KIWI G03 RUST G04 PEACOCK G05 BLACK

ALLEGRO
Cat. 2 / Cat. hydro 2



U07 WHITE U03 SAND U08 MOLE U09 STEEL U04 PEACOCK U02 GRASS U06 WHEAT U05 ORANGE

LANE
Cat. 2 / Cat. hydro 2

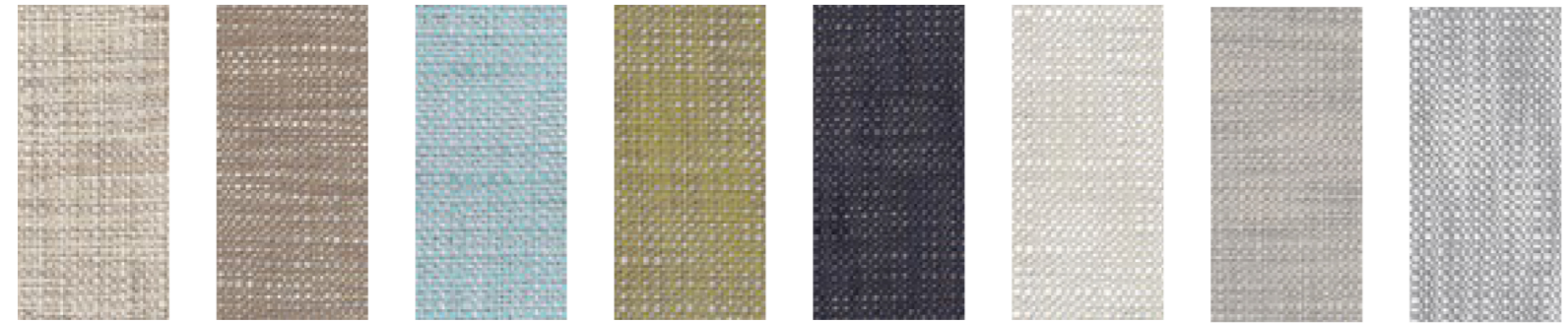


L01 MOLE/SAND L02 CURRY/SAND L03 GRASS/SKY L05 BLACK/SAND L09 STEEL/SAND L10 STONE/MOLE



U01 FUCSIA

PARK
Cat. 2 / Cat. hydro 2



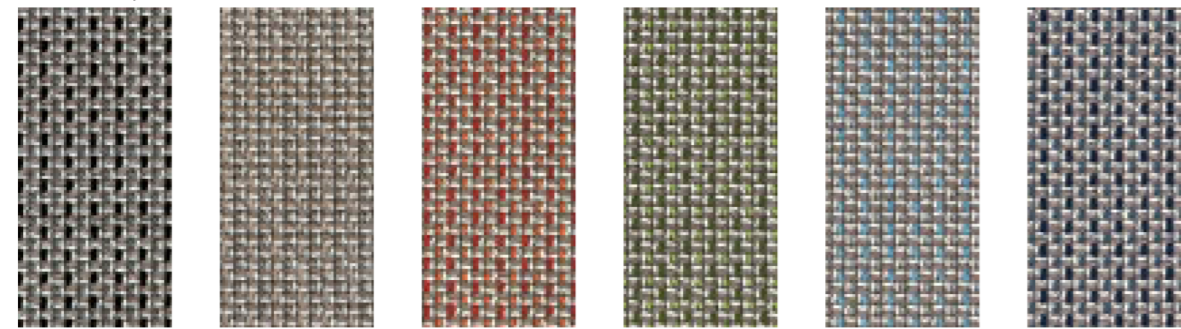
K01 SAND K02 MOLE K04 SKY K05 GRASS K06 NAVY K08 WHITE K09 STEEL K12 ICE

BOUQUET
Cat. 2 / Cat. hydro 2



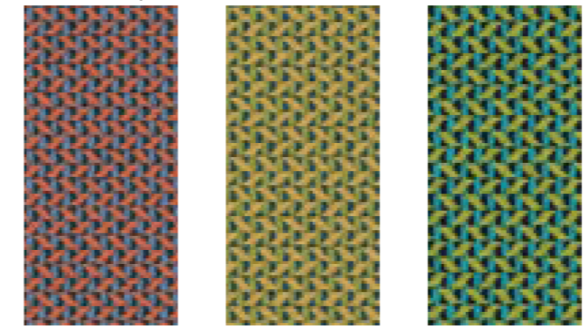
Q11 WHITE Q12 SAND Q15 BLUE Q14 GRASS Q13 BRICK

DOMINO
Cat. 2 / Cat. hydro 2



M01 GREY M02 SAND M03 RUST M04 GRASS M05 SKY M06 BLUE

SCALA
Cat. 2 / Cat. hydro 2



Y01 PEACH Y02 OIL Y03 PEACOCK