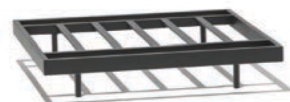


# DONGO

Design Studio Segers

## DONGO MODULAR SOFA

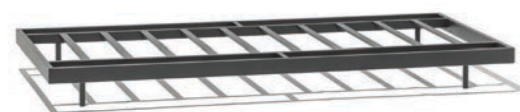
Set-ups can be designed using the following componets.



ONE-SEATER FRAME  
Powder coated stainless steel

w89 d89 h19 cm | 14,1 kg

REF: DOF1



TWO-SEATER FRAME  
Powder coated stainless steel

w178 d89 h19 cm | 24 kg

REF: DOF2



THREE-SEATER FRAME  
Powder coated stainless steel

w267 d89 h19 cm | 34,5 kg

REF: DOF3



POUF ELEMENT  
Quick-dry foam cushion/fabric

w91 d91 h22 cm | 7,5 kg

Cat.A fabric	Cat.B fabric
REF: DOC0-A	REF: DOC0-B



MIDDLE ELEMENT  
Quick-dry foam cushion/fabric  
Comfort cushion included in the price.

w91 d91 h48 cm | 13 kg

Cat.A fabric	Cat.B fabric
REF: DOC1-A	REF: DOC1-B



CORNER ELEMENT  
Quick-dry foam cushion/fabric  
Comfort cushion included in the price.

w91 d91 h48 cm | 16,4 kg

Cat.A fabric	Cat.B fabric
REF: DOC2-A	REF: DOC2-B



CORNER ELEMENT WITH LOW ARMREST  
Powder coated stainless steel/quick-dry foam cushion/fabric  
Comfort cushion included in the price.

w130 d93 h67 cm | 34,6 kg

Cat.A fabric	Cat.B fabric
REF: DOB3-A	REF: DOB3-B



CHAISE LONGUE WITH TABLE  
Powder coated stainless steel/quick-dry foam cushion/fabric/  
6 mm ceramic table top  
Comfort cushion included in the price.  
Armrest and table can be placed both on the left and right side.

w125 d180 h67 cm | 61 kg

Cat.A fabric	Cat.B fabric
REF: DOB1-A	REF: DOB1-B



CHAISE LONGUE | LEFT LOW ARMREST  
Powder coated stainless steel/quick-dry foam cushion/fabric  
Comfort cushion included in the price.

w125 d180 h67 cm | 58 kg

Cat.A fabric	Cat.B fabric
REF: DOB2L-A	REF: DOB2L-B



CHAISE LONGUE | RIGHT LOW ARMREST  
Powder coated stainless steel/quick-dry foam cushion/fabric  
Comfort cushion included in the price.

w125 d180 h67 cm | 58 kg

Cat.A fabric	Cat.B fabric
REF: DOB2R-A	REF: DOB2R-B



**INTEGRATED TABLE TOP**  
6 mm ceramic table top  
Includes ceramic plate and connect set, without frame.

w90 d90 h0,6 cm | 12,5 kg

REF: DOT90-CER



**ADD-ON TABLE**  
Powder coated stainless steel/6 mm ceramic table top  
Including frame, ceramic plate and removable legs.  
Possible to mount in the middle or at the end of a set-up.

w45 d90 h20 cm | 14 kg

REF: DOT45-CER



**POUF**  
Powder coated stainless steel/quick-dry foam cushion/fabric

w93 d93 h41 cm | 22 kg

Cat.A fabric	Cat.B fabric
--------------	--------------

REF: DOP-A	REF: DOP-B
------------	------------



**CLUB CHAIR**  
Powder coated stainless steel/quick-dry foam cushion/fabric  
Comfort cushion included in the price.

w91 d91 h67 cm | 36 kg

Cat.A fabric	Cat.B fabric
--------------	--------------

REF: DOA-A	REF: DOA-B
------------	------------

Protective cover  
REF: CP-DOA



**DONGO RECLINING LOUNGER**  
Powder coated stainless steel/quick-dry foam cushion/fabric

w202 d75 h41 cm | 36 kg

Cat.A fabric	Cat.B fabric
--------------	--------------

REF: DOL-A	REF: DOL-B
------------	------------

Protective cover  
REF: CP-DOL



**DONGO COFFEE TABLES**  
Powder coated stainless steel/6 mm ceramic table top

Ø40 h47cm | 3,9 kg

REF: DOTR40-47CER



w40 d40 h47 cm | 5,5 kg

REF: DOT404-47CER

w80 d80 h30 cm | 13,7 kg

REF: DOT808-30CER

w100 d100 h30 cm | 19,7 kg

REF: DOT101-30CER

w80 d80 h20 cm | 13,3 kg

REF: DOT808-20CER

w100 d100 h20 cm | 19,3 kg

REF: DOT101-20CER



w90 d50 h30 cm | 10,36 kg

REF: DOT905-30CER

w120 d50 h30 cm | 13,7 kg

REF: DOT1205-30CER

w150 d50 h30 cm | 16,7 kg

REF: DOT1505-30CER

w150 d50 h20 cm | 16,2 kg

REF: DOT1505-20CER

w150 d100 h30 cm | 30 kg

REF: DOT1501-30CER

w150 d100 h20 cm | 29,6 kg

REF: DOT1501-20CER

Note: All set-ups can be mirrored. Prices include frames, seating, armrest, backrest and comfort cushions, connection pieces and ceramic table tops where applicable. Prices do not include deco cushions and accessories. Protective polyester covers are optional, aimed to provide additional protection for winter months.



SET-UP A  
Powder coated stainless steel/quick-dry foam cushion/fabric

w274 d93 h67 cm

Cat.A fabric	Cat.B fabric
REF: DO-setA-A	REF: DO-setA-B

Protective cover  
REF: CP-DO-setA



SET-UP E  
Powder coated stainless steel/quick-dry foam cushion/fabric

w363 d93 h67 cm

Cat.A fabric	Cat.B fabric
REF: DO-setE-A	REF: DO-setE-B

Protective cover  
REF: CP-DO-setE



SET-UP B  
Powder coated stainless steel/quick-dry foam cushion/fabric /6mm ceramic

w361 d93 h67 cm

Cat.A fabric	Cat.B fabric
REF: DO-setB-A	REF: DO-setB-B

Protective cover  
REF: CP-DO-setB



SET-UP F  
Powder coated stainless steel/quick-dry foam cushion/fabric /6mm ceramic

w361 d184 h67 cm

Cat.A fabric	Cat.B fabric
REF: DO-setF-A	REF: DO-setF-B

Protective cover  
REF: CP-DO-setF



SET-UP C  
Powder coated stainless steel/quick-dry foam cushion/fabric

w274 d182 h67 cm

Category A fabric	Category B fabric
REF: DO-setC-A	REF: DO-setC-B

Protective cover  
REF: CP-DO-setC



SET-UP 01  
Powder coated stainless steel/quick-dry foam cushion/fabric /6mm ceramic

w346 d180 h67 cm

Cat.A fabric	Cat.B fabric
REF: DO-set01-A	REF: DO-set01-B

Protective cover  
REF: CP-DO-set01



SET-UP D  
Powder coated stainless steel/quick-dry foam cushion/fabric

w362 d184 h67 cm

Cat.A fabric	Cat.B fabric
REF: DO-setD-A	REF: DO-setD-B

Protective cover  
REF: CP-DO-setD



SET-UP 05  
Powder coated stainless steel/quick-dry foam cushion /fabric/6mm ceramic

w346 d180 h67 cm

Cat.A fabric	Cat.B fabric
REF: DO-set05-A	REF: DO-set05-B

Protective cover  
REF: CP-DO-set05



SET-UP 04  
Powder coated stainless steel/quick-dry foam cushion/fabric

w346 d180 h67 cm

Cat.A fabric	Cat.B fabric
REF: DO-set04-A	REF: DO-set04-B

Protective cover  
REF: CP-DO-set04



SET-UP 06  
Powder coated stainless steel/quick-dry foam cushion /fabric

w437 d180 h67 cm

Cat.A fabric	Cat.B fabric
REF: DO-set06-A	REF: DO-set06-B

Protective cover  
REF: CP-DO-set06



SET-UP G  
Powder coated stainless steel/quick-dry foam cushion/fabric /6mm ceramic

w448 d93 h67 cm

Cat.A fabric	Cat.B fabric
REF: DO-setG-A	REF: DO-setG-B

Protective cover  
REF: CP-DO-setG



SET-UP J  
Powder coated stainless steel/quick-dry foam cushion/fabric

w274 d273 h67 cm

Cat.A fabric	Cat.B fabric
REF: DO-setJ-A	REF: DO-setJ-B

Protective cover  
REF: CP-DO-setJ



SET-UP H  
Powder coated stainless steel/quick-dry foam cushion/fabric /6mm ceramic

w274 d227 h67 cm

Cat.A fabric	Cat.B fabric
REF: DO-setH-A	REF: DO-setH-B

Protective cover  
REF: CP-DO-setH



SET-UP K  
Powder coated stainless steel/quick-dry foam cushion/fabric

w274 d274 h67 cm

Cat.A fabric	Cat.B fabric
REF: DO-setK-A	REF: DO-setK-B

Protective cover  
REF: CP-DO-setK



SET-UP I  
Powder coated stainless steel/quick-dry foam cushion/fabric

w363 d184 h67 cm

Cat.A fabric	Cat.B fabric
REF: DO-setI-A	REF: DO-setI-B

Protective cover  
REF: CP-DO-setI



SET-UP L  
Powder coated stainless steel/quick-dry foam cushion/fabric

w363 d273 h67 cm

Cat.A fabric	Cat.B fabric
REF: DO-setL-A	REF: DO-setL-B

Protective cover  
REF: CP-DO-setL



SET-UP M  
Powder coated stainless steel/quick-dry foam cushion/fabric /6mm ceramic

w361 d274 h67 cm

Cat.A fabric	Cat.B fabric
REF: DO-setM-A	REF: DO-setM-B

Protective cover  
REF: CP-DO-setM



SET-UP P  
Powder coated stainless steel/quick-dry foam cushion/fabric/6mm ceramic

w453 d273 h67 cm

Cat.A fabric	Cat.B fabric
REF: DO-setP-A	REF: DO-setP-B

Protective cover  
REF: CP-DO-setP



SET-UP 07  
Powder coated stainless steel/quick-dry foam cushion /fabric/6mm ceramic

w527 d180 h67 cm

Cat.A fabric	Cat.B fabric
REF: DO-set07-A	REF: DO-set07-B

Protective cover  
REF: CP-DO-set07



SET-UP Q  
Powder coated stainless steel/quick-dry foam cushion/fabric/6mm ceramic

w451 d361 h67 cm

Cat.A fabric	Cat.B fabric
REF: DO-setQ-A	REF: DO-setQ-B

Protective cover  
REF: CP-DO-setQ



SET-UP N  
Powder coated stainless steel/quick-dry foam cushion/fabric

w363 d274 h67 cm

Cat.A fabric	Cat.B fabric
REF: DO-setN-A	REF: DO-setN-B

Protective cover  
REF: CP-DO-setN



SET-UP 02  
Powder coated stainless steel/quick-dry foam cushion/fabric /6mm ceramic

w489 d180 h67 cm

Cat.A fabric	Cat.B fabric
REF: DO-set02-A	REF: DO-set02-B

Protective cover  
REF: CP-DO-set02



SET-UP O  
Powder coated stainless steel/quick-dry foam cushion/fabric/6mm ceramic

w363 d272 h67 cm

Cat.A fabric	Cat.B fabric
REF: DO-setO-A	REF: DO-setO-B

Protective cover  
REF: CP-DO-setO



SET-UP 03  
Powder coated stainless steel/quick-dry foam cushion/fabric /6mm ceramic

w522 d180 h67 cm

Cat.A fabric	Cat.B fabric
REF: DO-set03-A	REF: DO-set03-B

Protective cover  
REF: CP-DO-set03

### SET-UP R

Powder coated stainless steel/quick-dry foam cushion/  
fabric/6mm ceramic

w448 d185 h67 cm

Cat.A fabric

Cat.B fabric

REF: DO-setR-A

REF: DO-setR-B

Protective cover

REF: CP-DO-setR



### SET-UP S

Powder coated stainless steel/quick-dry foam cushion/  
fabric/6mm ceramic

w453 d361 h67 cm

Cat.A fabric

Cat.B fabric

REF: DO-setS-A

REF: DO-setS-B

Protective cover

REF: CP-DO-setS



### SET-UP 08

Powder coated stainless steel/quick-dry foam cushion/  
fabric/6mm ceramic

w489 d363 h67 cm

Cat.A fabric

Cat.B fabric

REF: DO-set08-A

REF: DO-set08-B

Protective cover

REF: CP-DO-set08



### SET-UP T

Powder coated stainless steel/quick-dry foam cushion/  
fabric/6mm ceramic

w450 d361 h67 cm

Cat.A fabric

Cat.B fabric

REF: DO-setT-A

REF: DO-setT-B

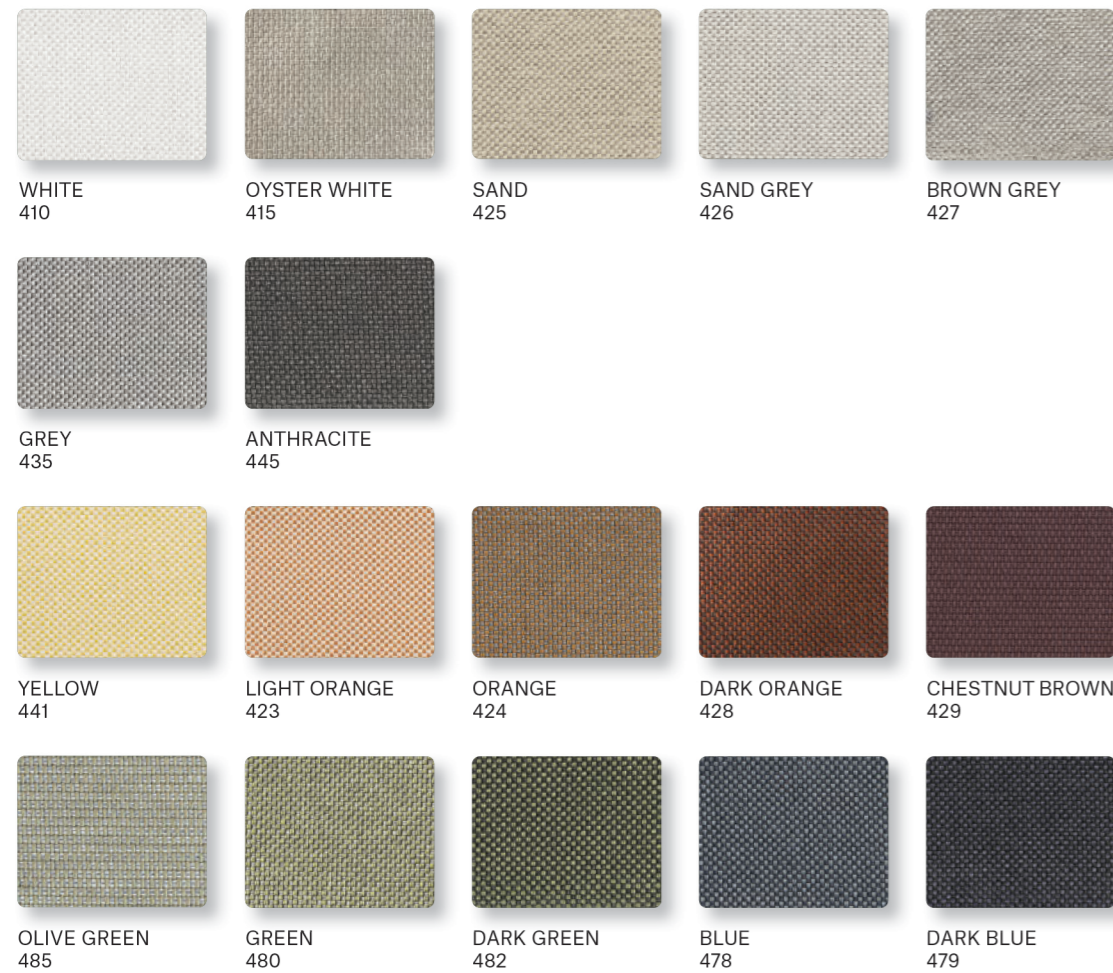
Protective cover

REF: CP-DO-setT

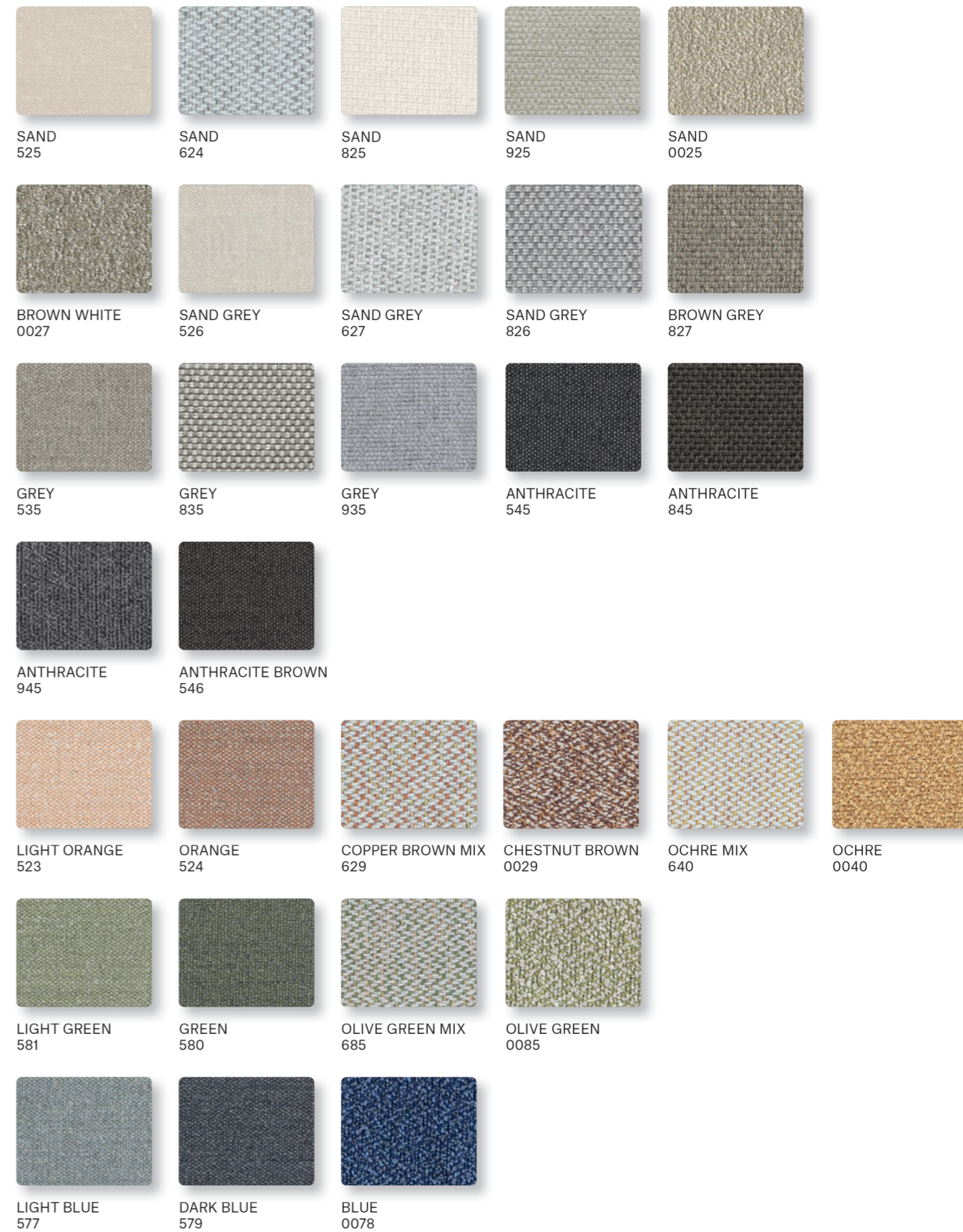
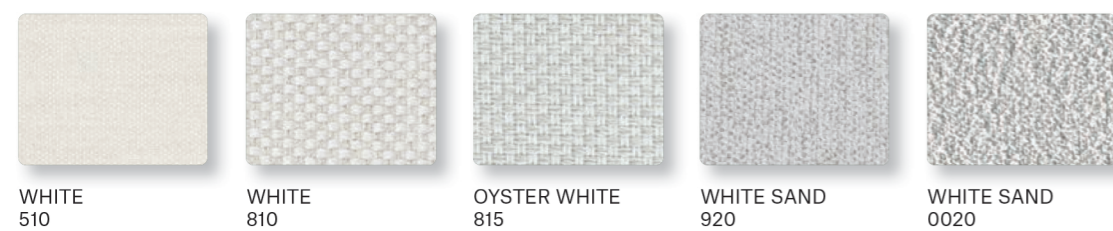


# COLOUR OPTIONS

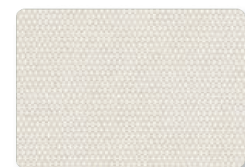
## FABRICS CATEGORY A



## FABRICS CATEGORY B



## FABRICS CATEGORY C



SAND  
725



LIGHT GREY  
735



TAUPE  
717



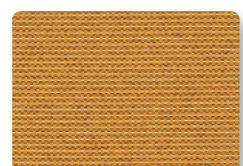
ROSE  
712



BRONZE  
730



YELLOW  
741



ORANGE  
728

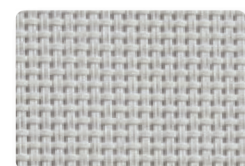


LIGHT BLUE  
777



DEEP BLUE  
779

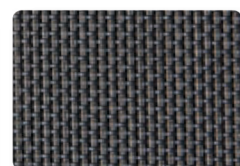
## TECHNICAL FABRICS



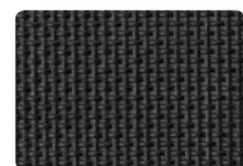
WHITE  
5100



WHITE GREY  
5400



ANTHRACITE  
5450

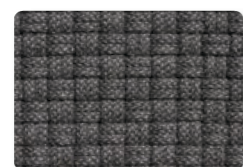


BLACK  
5500

## OUTDOOR RUGS

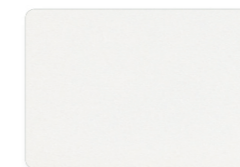


LIGHT GREY  
35



ANTHRACITE  
45

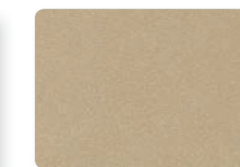
## POWDER COATINGS | MATTE



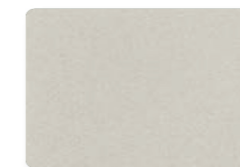
WHITE  
110



OYSTER WHITE  
115



LATTE  
125



SILK GREY  
104



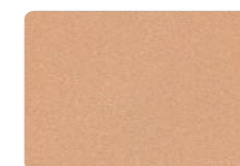
WARM GREY  
134



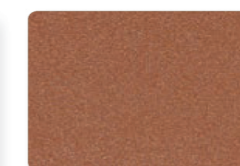
ANTHRACITE  
145



BLACK  
150



SALMON BEIGE  
112



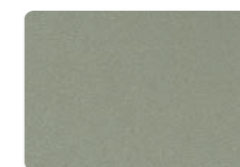
COPPER BROWN  
120



RUST BROWN  
130



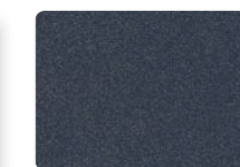
OCHRE  
140



CEMENT GREEN  
190



OLIVE GREEN  
185



DARK BLUE  
171

## POWDER COATINGS | HIGH GLOSS



CHESTNUT BROWN  
G129



OCHRE  
G140



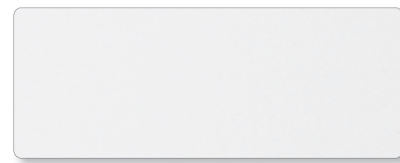
OLIVE GREEN  
G185



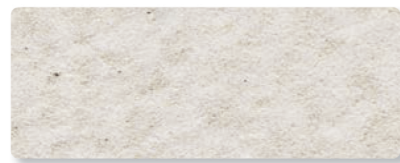
DARK BLUE  
G171

# PRODUCT CARE

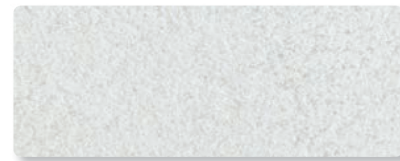
## CERAMIC



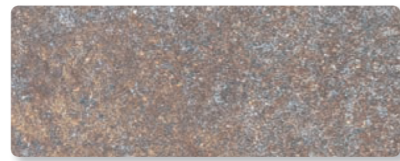
WHITE  
210



OYSTER STONE  
209



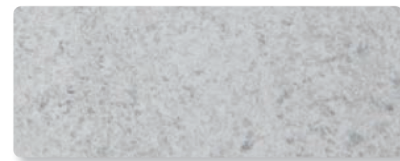
SAND  
225



RUST BROWN  
230



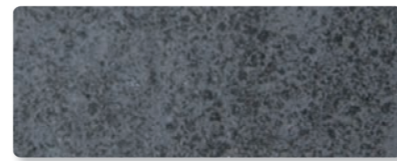
WARM GREY  
235



PEARL STONE  
213

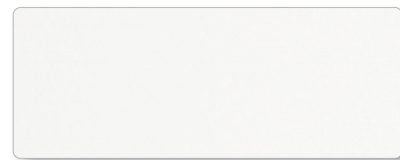


GREY STONE  
215

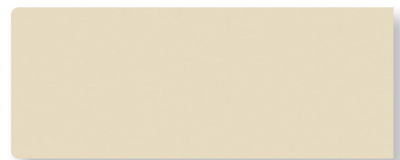


ANTHRACITE STONE  
217

## HPL



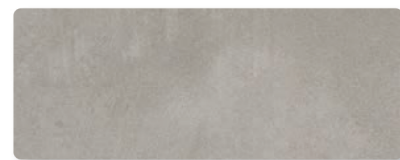
WHITE  
310



SAND  
325



ANTHRACITE  
345



GREY  
335



DARK GREY  
336

### POWDER COATED STAINLESS STEEL OR ALUMINIUM FRAMES

Clean the frame with a solution of warm water and a mild soap. Avoid the use of abrasive cleaners. Corrective paint for small scratchings is available to order in all colours.

### BRUSHED STAINLESS STEEL FRAMES

Rinse the frame regularly with warm water. Clean with a spray for brushed stainless steel.

When placing the furniture in brushed stainless steel in location close to the sea shore or covered chlorinated swimming pools an extra anti-corrosion treatment is recommended. The high level of salt reduces the resistance to corrosion of brushed stainless steel. The disregard of this recommendation voids the guarantee. An extra anti-corrosion treatment supplement is +10%. This treatment is not needed for powdercoated stainless steel or aluminium.

### CERAMIC

Ceramics has no special maintenance requirements. To clean the table top surface use warm water and a neutral detergent. For persistent stains, you may use normal household detergents, including products to eliminate grease or lime scale.

### HPL

Clean the table top surface with pure warm water or a solution of warm water and mild soap using a soft sponge or cloth. If stains cannot be removed use common household cleaners without abrasives. For persistent stains, you may use organic solvents such as acetone or alcohol. Remember to wash the surface with pure water in the end to avoid any residue of detergents.

### FABRICS

Use soap and water for cleaning stains. Upholstery can be machine-washed at 30° using a mild laundry detergent and a gentle cycle.



### OUTDOOR RUGS

Rugs can be cleaned with vacuum cleaner without brushes. For a more thorough cleaning use a solution of cold water and a mild soap. Avoid the use of abrasive brushes, bleaching agents or solvents, professional dry cleaning and high pressure washers.

### BATYLINE

Clean with warm soap water or use a special Batyline cleaner. Spray the cleaner on the surface, leave for 2 to 3 minutes, use a soft brittle brush and brush the surface repeatedly in a circular motion. Let stand for one minute and wash with plenty of water to avoid residue drying on the surface and wipe with a dry cloth.