

BAZA

Design Studio Segers

BAZA ROUND

Note: Price includes frame and all cushions (seating cushions, back cushions and deco cushions). Seating cushions and back cushions are always in category A or B fabrics. Deco cushions can be selected from A, B or C category fabrics with the price remaining the same.



CLUB CHAIR

Powder coated stainless steel/quick-dry foam/fabric

w89 d80 h73 cm | 17 kg

Cat.A fabric	Cat.B fabric	Protective cover REF: CP-BRC
REF: BRC-A	REF: BRC-B	

Price includes:

- 1 seat cushion in A or B fabric
- 1 back cushion 50x50 cm in A or B fabric
- 1 deco cushion 40x40 cm in A, B or C fabric



SMALL POUF

Powder coated stainless steel/quick-dry foam/fabric

Ø70 h45 cm | 12 kg

Cat.A fabric	Cat.B fabric	Protective cover REF: CP-BRP-S
REF: BRP-S-A	REF: BRP-S-B	



MEDIUM POUF

Powder coated stainless steel/quick-dry foam/fabric

Ø105 h45 cm | 19 kg

Cat.A fabric	Cat.B fabric	Protective cover REF: CP-BRP-M
REF: BRP-M-A	REF: BRP-M-B	



LOUNGE CHAIR

Powder coated stainless steel/quick-dry foam/fabric

w122 d112 h73 cm | 25 kg

Cat.A fabric	Cat.B fabric	Protective cover REF: CP-BRL
REF: BRL-A	REF: BRL-B	

Price includes:

- 1 seat cushion in A or B fabric
- 2 back cushions 50x50 cm in A or B fabric
- 2 deco cushions 40x40 cm and 1 deco cushion 40x60 cm in A, B or C fabric



SWING

Powder coated stainless steel/quick-dry foam/fabric

w122 d112 h54 cm | 29 kg

Cat.A fabric	Cat.B fabric	Protective cover REF: CP-BRS
REF: BRS-A	REF: BRS-B	

Price includes:

- 1 seat cushion in A or B fabric
- 3 back cushions 50x50 cm in A or B fabric
- 2 deco cushions 40x40 cm and 1 deco cushion 40x60 cm in A, B or C fabric
- Ropes and hook



DAYBED

Powder coated stainless steel/quick-dry foam/fabric

w170 d164 h73 cm | 46,5 kg

Cat.A fabric	Cat.B fabric	Protective cover REF: CP-BRD
REF: BRD-A	REF: BRD-B	

Price includes:

- 1 seat cushion in A or B fabric
- 4 back cushions 50x50 cm in A or B fabric
- 3 deco cushions 40x40 cm and 1 deco cushion 40x60 cm in A, B or C fabric



BAZA CHAIR

Powder coated stainless steel/fabric
Dryfeel foam cushion included in the price.

w59 d61 h78 cm | 6,2 kg

Cat.A fabric	Cat.B fabric	Cat.C fabric
REF: BAZ1-A	REF: BAZ1-B	REF: BAZ1-C

BAZA MODULAR SOFA

Set-ups can be designed using the following componets.



ONE-SEATER FRAME WITH CUSHION
Powder coated stainless steel/quick-dry foam/fabric

w80 d80 h46 cm | 13,3 kg

Cat.A fabric | Cat.B fabric

REF: BS1-A | REF: BS1-B



TWO-SEATER FRAME WITH CUSHION
Powder coated stainless steel/quick-dry foam/fabric

w160 d80 h46 cm | 22,3 kg

Cat.A fabric | Cat.B fabric

REF: BS2-A | REF: BS2-B



THREE-SEATER FRAME WITH CUSHION
Powder coated stainless steel/quick-dry foam/fabric

w240 d80 h46 cm | 31,3 kg

Cat.A fabric | Cat.B fabric

REF: BS3-A | REF: BS3-B



CORNER BACKREST FRAME WITH CUSHION
Powder coated stainless steel/quick-dry foam/fabric

w80 d80 h62 cm | 9,3 kg

Cat.A fabric | Cat.B fabric

REF: BA1-A | REF: BA1-B



LONG CORNER, LEFT BACKREST FRAME WITH CUSHION
Powder coated stainless steel/quick-dry foam/fabric

w160 d80 h62 cm | 13,1 kg

Cat.A fabric | Cat.B fabric

REF: BA2L-A | REF: BA2L-B



LONG CORNER, RIGHT BACKREST FRAME WITH CUSHION
Powder coated stainless steel/quick-dry foam/fabric

w160 d80 h62 cm | 13,1 kg

Cat.A fabric | Cat.B fabric

REF: BA2R-A | REF: BA2R-B



EXTRA LONG CORNER, LEFT BACKREST FRAME WITH CUSHION
Powder coated stainless steel/quick-dry foam/fabric

w240 d80 h62 cm | 17 kg

Cat.A fabric | Cat.B fabric

REF: BA3L-A | REF: BA3L-B



EXTRA LONG CORNER, RIGHT BACKREST FRAME WITH CUSHION
Powder coated stainless steel/quick-dry foam/fabric

w240 d80 h62 cm | 17 kg

Cat.A fabric | Cat.B fabric

REF: BA3R-A | REF: BA3R-B

SELECTED EXAMPLES OF BAZA SET-UPS

Note: All set-ups can be mirrored. Prices include frames, seating and backrest cushions, connection pieces where necessary. Prices do not include deco cushions and accessories.

Set-ups can be also planned online using our Baza sofa 2D planner - <https://www.todus.cz/planner>.

Protective polyester covers are optional, aimed to provide additional protection for winter months.



SET-UP A
Powder coated stainless steel/quick-dry foam/fabric

w168 d84 h80 cm

Cat.A fabric | Cat.B fabric

REF: B-setA-A | REF: B-setA-B

Protective cover
REF: CP-B-setA



SET-UP B
Powder coated stainless steel/quick-dry foam/fabric

w244 d160 h80 cm

Cat.A fabric | Cat.B fabric

REF: B-setB-A | REF: B-setB-B

Protective cover
REF: CP-B-setB



SET-UP C
Powder coated stainless steel/quick-dry foam/fabric

w248 d84 h80 cm

Cat.A fabric	Cat.B fabric
REF: B-setC-A	REF: B-setC-B

Protective cover
REF: CP-B-setC



SET-UP F2
Powder coated stainless steel/quick-dry foam/fabric

w328 d84 h80 cm

Cat.A fabric	Cat.B fabric
REF: B-setF2-A	REF: B-setF2-B

Protective cover
REF: CP-B-setF2



SET-UP D
Powder coated stainless steel/quick-dry foam/fabric

w168 d164 h80 cm

Cat.A fabric	Cat.B fabric
REF: B-setD-A	REF: B-setD-B

Protective cover
REF: CP-B-setD
421 EUR

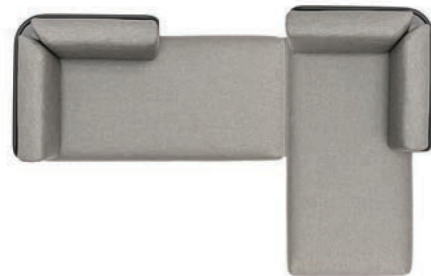


SET-UP G
Powder coated stainless steel/quick-dry foam/fabric

w248 d164 h80 cm

Cat.A fabric	Cat.B fabric
REF: B-setG-A	REF: B-setG-B

Protective cover
REF: CP-B-setG

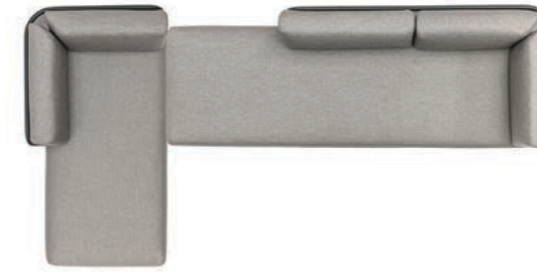


SET-UP E
Powder coated stainless steel/quick-dry foam/fabric

w248 d164 h80 cm

Cat.A fabric	Cat.B fabric
REF: B-setE-A	REF: B-setE-B

Protective cover
REF: CP-B-setE



SET-UP H
Powder coated stainless steel/quick-dry foam/fabric

w328 d164 h80 cm

Cat.A fabric	Cat.B fabric
REF: B-setH-A	REF: B-setH-B

Protective cover
REF: CP-B-setH



SET-UP F1
Powder coated stainless steel/quick-dry foam/fabric

w248 d164 h80 cm

Cat.A fabric	Cat.B fabric
REF: B-setF1-A	REF: B-setF1-B

Protective cover
REF: CP-B-setF1

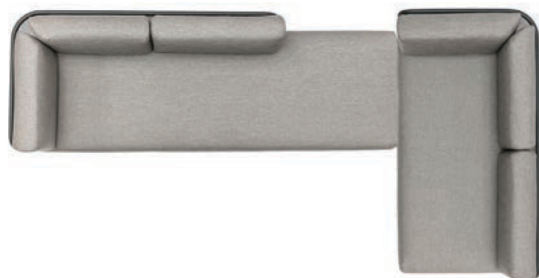


SET-UP I
Powder coated stainless steel/quick-dry foam/fabric

w328 d164 h80 cm

Cat.A fabric	Cat.B fabric
REF: B-setI-A	REF: B-setI-B

Protective cover
REF: CP-B-setI

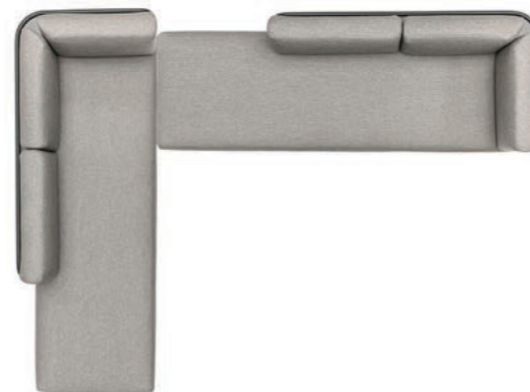


SET-UP J
Powder coated stainless steel/quick-dry foam/fabric

w328 d164 h80 cm

Cat.A fabric	Cat.B fabric
REF: B-setJ-A	REF: B-setJ-B

Protective cover
REF: CP-B-setJ



SET-UP K
Powder coated stainless steel/quick-dry foam/fabric

w328 d244 h80 cm

Cat.A fabric	Cat.B fabric
REF: B-setK-A	REF: B-setK-B

Protective cover
REF: CP-B-setK



SET-UP S
Powder coated stainless steel/quick-dry foam/fabric

w328 d164 h80 cm

Cat.A fabric	Cat.B fabric
REF: B-setS-A	REF: B-setS-B

Protective cover
REF: CP-B-setS



SET-UP L
Powder coated stainless steel/quick-dry foam/fabric

w248 d248 h80 cm

Cat.A fabric	Cat.B fabric
REF: B-setL-A	REF: B-setL-B

Protective cover
REF: CP-B-setL



SET-UP T
Powder coated stainless steel/quick-dry foam/fabric

w408 d164 h80 cm

Cat.A fabric	Cat.B fabric
REF: B-setT-A	REF: B-setT-B

Protective cover
REF: CP-B-setT



SET-UP U
Powder coated stainless steel/quick-dry foam/fabric

w328 d244 h80 cm

Cat.A fabric	Cat.B fabric
REF: B-setU-A	REF: B-setU-B

Protective cover
REF: CP-B-setU

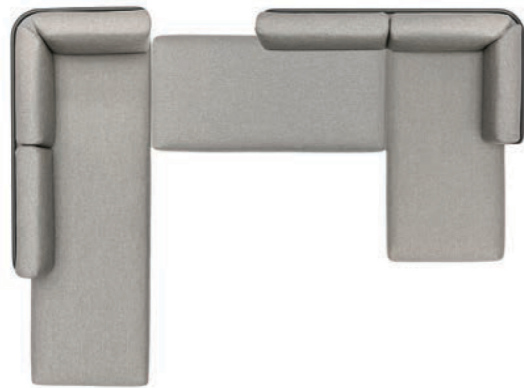


SET-UP R
Powder coated stainless steel/Dryf quick-dry eel foam/fabric

w328 d248 h80 cm

Cat.A fabric	Cat.B fabric
REF: B-setR-A	REF: B-setR-B

Protective cover
REF: CP-B-setR

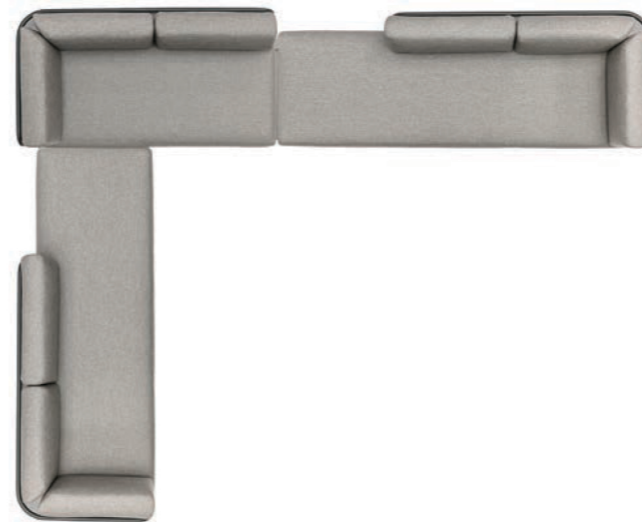


SET-UP M
Powder coated stainless steel/quick-dry foam/fabric

w328 d244 h80 cm

Cat.A fabric	Cat.B fabric
REF: B-setM-A	REF: B-setM-B

Protective cover
REF: CP-B-setM

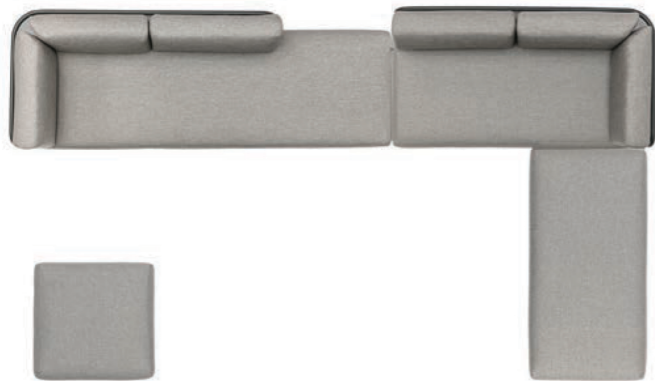


SET-UP P
Powder coated stainless steel/quick-dry foam/fabric

w408 d328 h80 cm

Cat.A fabric	Cat.B fabric
REF: B-setP-A	REF: B-setP-B

Protective cover
REF: CP-B-setP

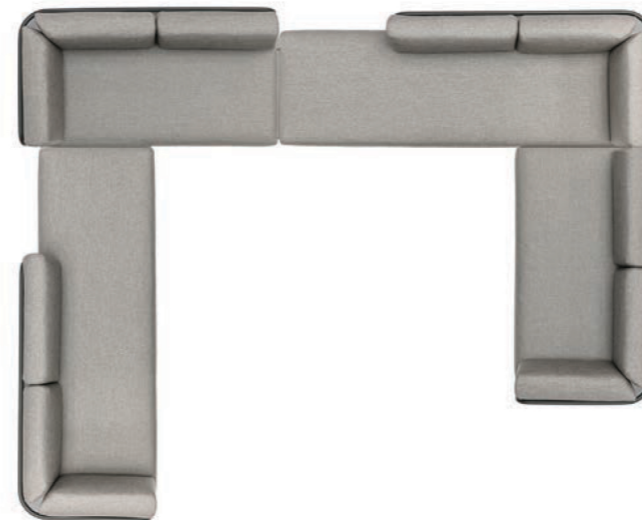


SET-UP N
Powder coated stainless steel/quick-dry foam/fabric

w408 d244 h80 cm

Cat.A fabric	Cat.B fabric
REF: B-setN-A	REF: B-setN-B

Protective cover
REF: CP-B-setN



SET-UP Q
Powder coated stainless steel/quick-dry foam/fabric

w408 d328 h80 cm

Cat.A fabric	Cat.B fabric
REF: B-setQ-A	REF: B-setQ-B

Protective cover
REF: CP-B-setQ



SET-UP O
Powder coated stainless steel/quick-dry foam/fabric

w328 d328 h80 cm

Cat.A fabric	Cat.B fabric
REF: B-setO-A	REF: B-setO-B

Protective cover
REF: CP-B-setO

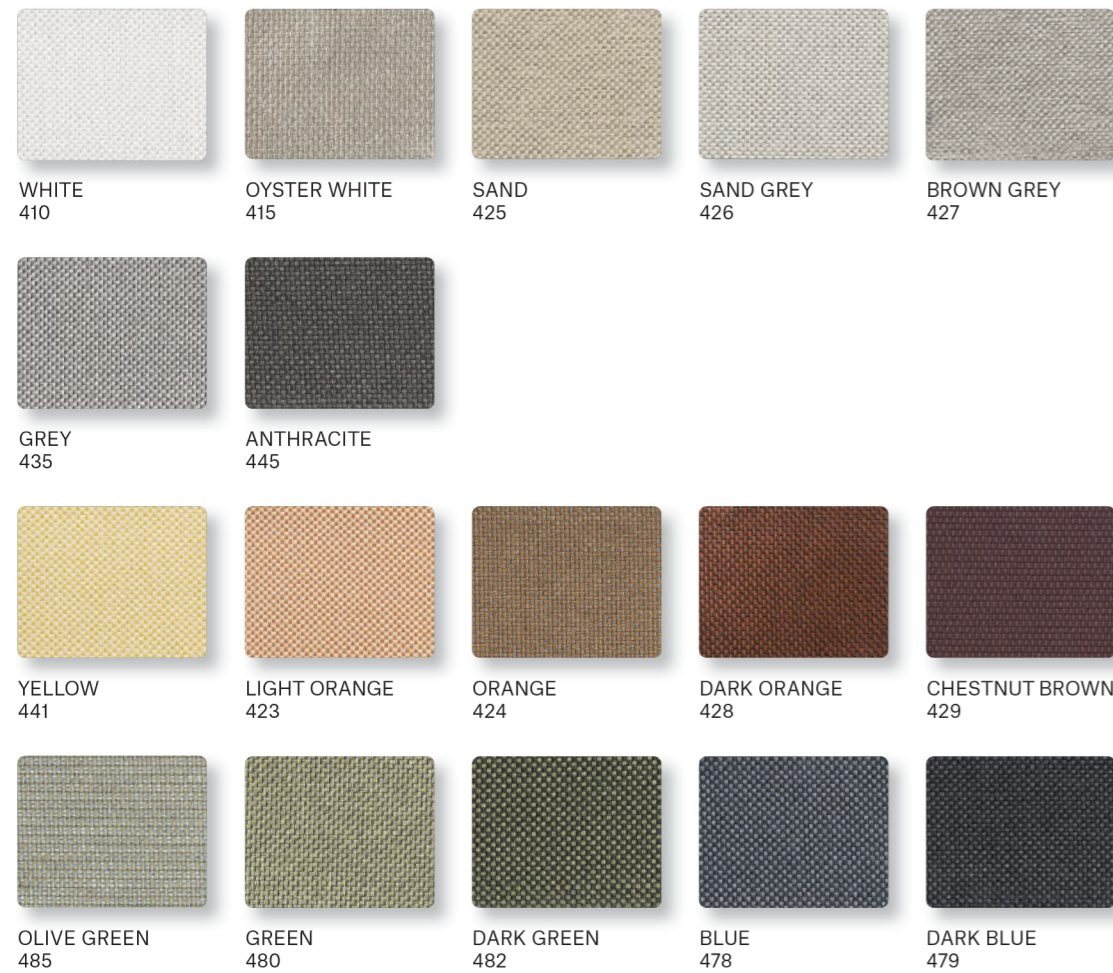


INTEGRATED TABLE
Powder coated stainless steel/HPL or 12 mm ceramic table top

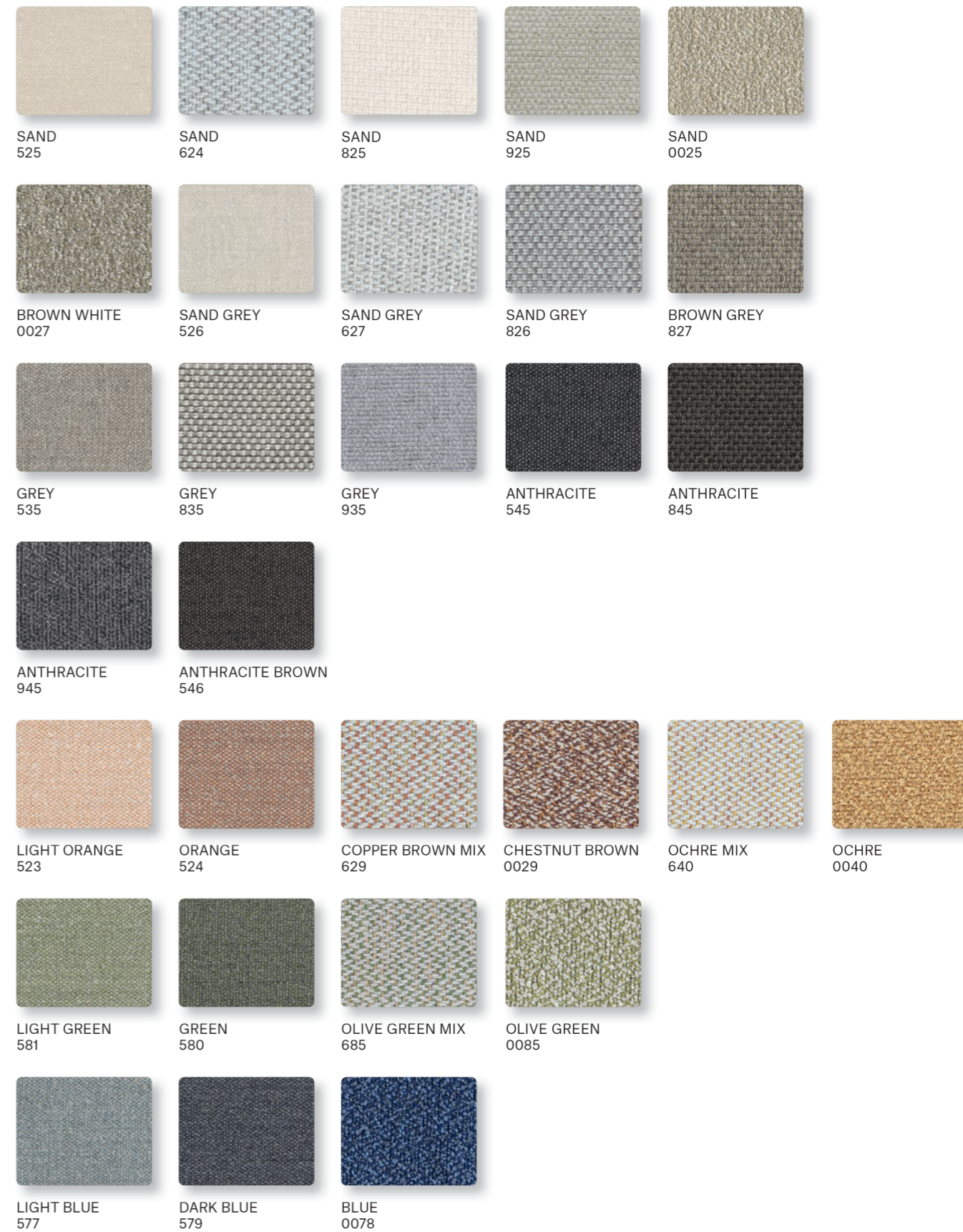
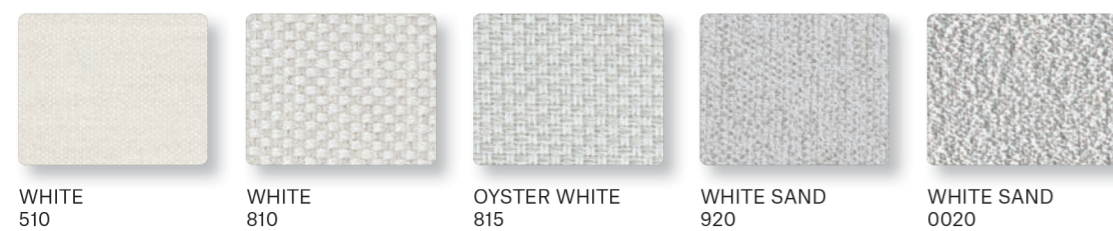
HPL	Ceramic
w40 d80 cm 11,3 kg REF: BF40-HPL	w40 d80 cm 11,8 kg REF: BF40-CER
w80 d80 cm 22,2 kg REF: BF80-HPL	w80 d80 cm 22,7 kg REF: BF80-CER

COLOUR OPTIONS

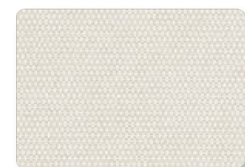
FABRICS CATEGORY A



FABRICS CATEGORY B



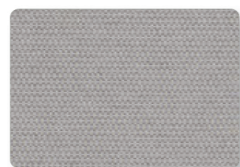
FABRICS CATEGORY C



SAND
725



LIGHT GREY
735



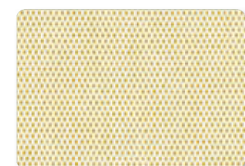
TAUPE
717



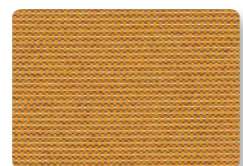
ROSE
712



BRONZE
730



YELLOW
741



ORANGE
728

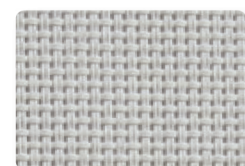


LIGHT BLUE
777



DEEP BLUE
779

TECHNICAL FABRICS



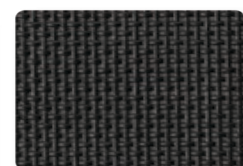
WHITE
5100



WHITE GREY
5400



ANTHRACITE
5450

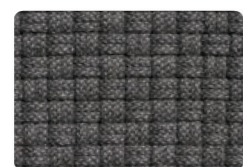


BLACK
5500

OUTDOOR RUGS

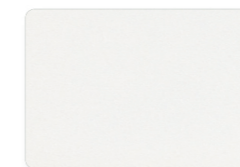


LIGHT GREY
35

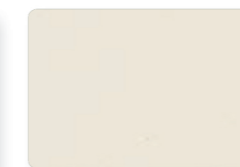


ANTHRACITE
45

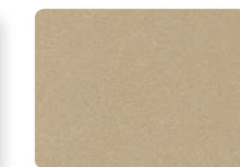
POWDER COATINGS | MATTE



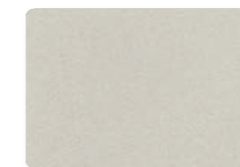
WHITE
110



OYSTER WHITE
115



LATTE
125



SILK GREY
104



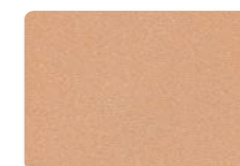
WARM GREY
134



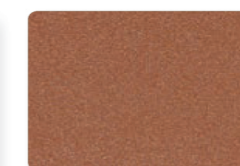
ANTHRACITE
145



BLACK
150



SALMON BEIGE
112



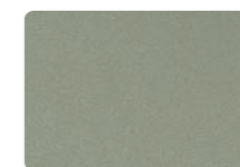
COPPER BROWN
120



RUST BROWN
130



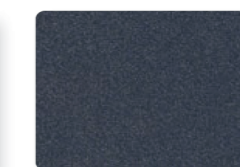
OCHRE
140



CEMENT GREEN
190



OLIVE GREEN
185



DARK BLUE
171

POWDER COATINGS | HIGH GLOSS



CHESTNUT BROWN
G129



OCHRE
G140



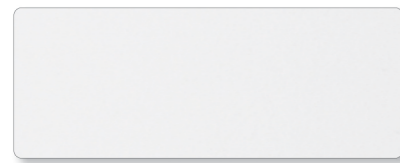
OLIVE GREEN
G185



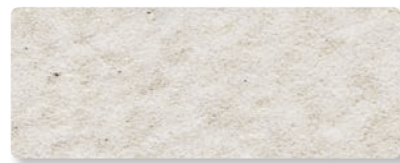
DARK BLUE
G171

PRODUCT CARE

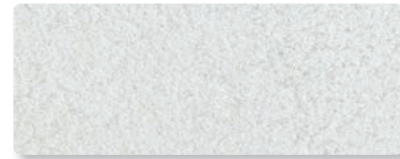
CERAMIC



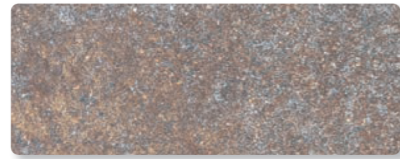
WHITE
210



OYSTER STONE
209



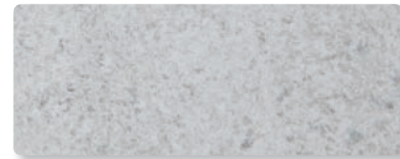
SAND
225



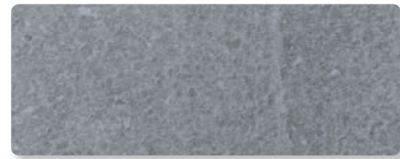
RUST BROWN
230



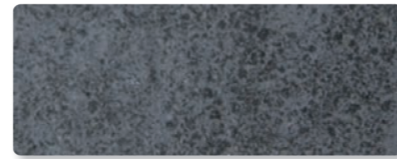
WARM GREY
235



PEARL STONE
213

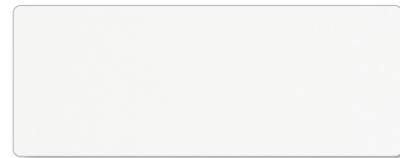


GREY STONE
215

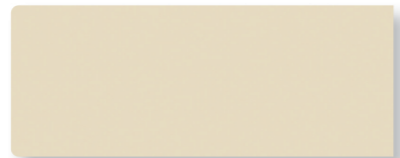


ANTHRACITE STONE
217

HPL



WHITE
310



SAND
325



ANTHRACITE
345



GREY
335



DARK GREY
336

POWDER COATED STAINLESS STEEL OR ALUMINIUM FRAMES

Clean the frame with a solution of warm water and a mild soap. Avoid the use of abrasive cleaners. Corrective paint for small scratchings is available to order in all colours.

BRUSHED STAINLESS STEEL FRAMES

Rinse the frame regularly with warm water. Clean with a spray for brushed stainless steel.

When placing the furniture in brushed stainless steel in location close to the sea shore or covered chlorinated swimming pools an extra anti-corrosion treatment is recommended. The high level of salt reduces the resistance to corrosion of brushed stainless steel. The disregard of this recommendation voids the guarantee. An extra anti-corrosion treatment supplement is +10%. This treatment is not needed for powdercoated stainless steel or aluminium.

CERAMIC

Ceramics has no special maintenance requirements. To clean the table top surface use warm water and a neutral detergent. For persistent stains, you may use normal household detergents, including products to eliminate grease or lime scale.

HPL

Clean the table top surface with pure warm water or a solution of warm water and mild soap using a soft sponge or cloth. If stains cannot be removed use common household cleaners without abrasives. For persistent stains, you may use organic solvents such as acetone or alcohol. Remember to wash the surface with pure water in the end to avoid any residue of detergents.

FABRICS

Use soap and water for cleaning stains. Upholstery can be machine-washed at 30° using a mild laundry detergent and a gentle cycle.



OUTDOOR RUGS

Rugs can be cleaned with vacuum cleaner without brushes. For a more thorough cleaning use a solution of cold water and a mild soap. Avoid the use of abrasive brushes, bleaching agents or solvents, professional dry cleaning and high pressure washers.

BATYLINE

Clean with warm soap water or use a special Batyline cleaner. Spray the cleaner on the surface, leave for 2 to 3 minutes, use a soft brittle brush and brush the surface repeatedly in a circular motion. Let stand for one minute and wash with plenty of water to avoid residue drying on the surface and wipe with a dry cloth.